

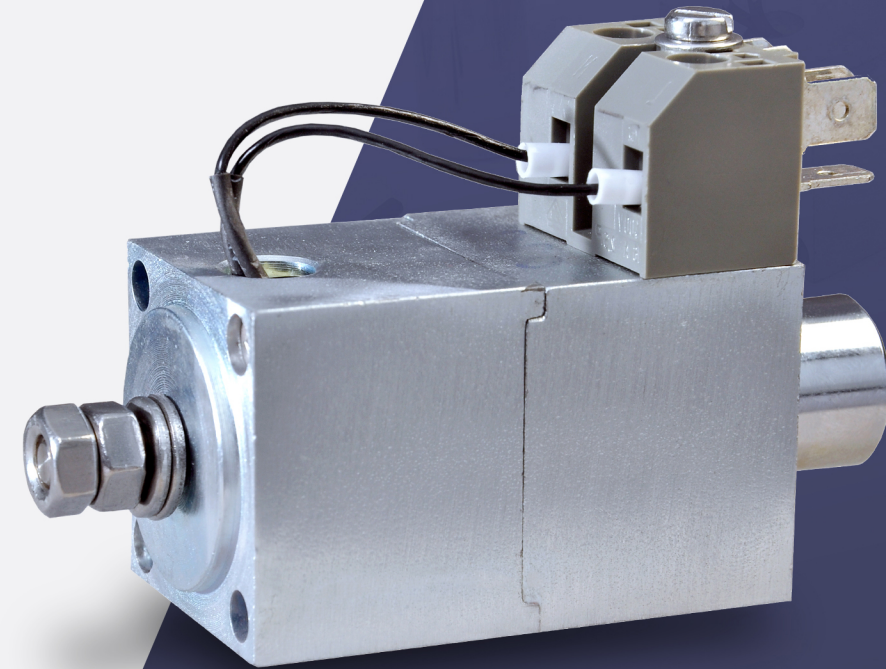
# PRODUCT PORTFOLIO

precision, to the core

# Linear Solenoid Actuators

## Product Specifications:

- + **Varieties:** 110 / 220VDC
- + **Stroke:** 4.5 / 7.3mm
- + **Force:** 145N
- + **L/W/H:** 89 / 35 / 35mm & 98.1 / 35 / 35mm
- + **Application:** Power & Energy Sector



# Industrial Shock Absorbers

## Product Specifications:

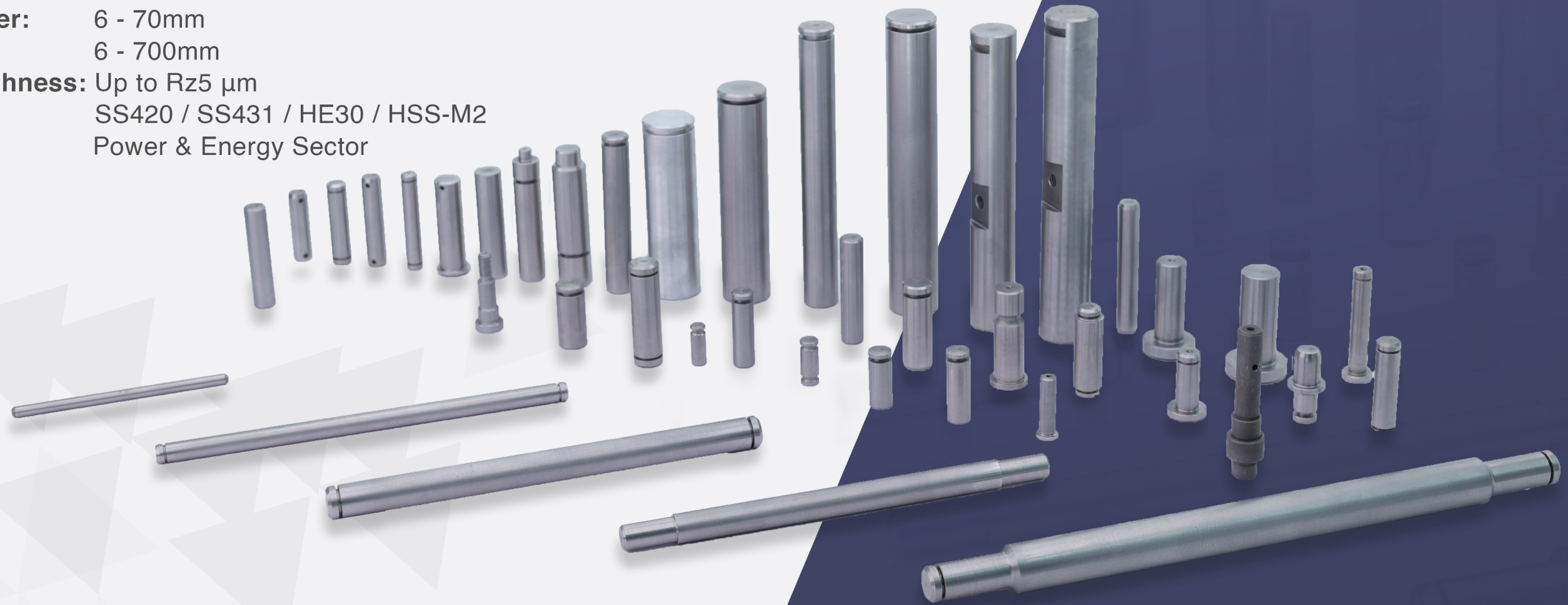
- + **Varieties:** 25 types
- + **Outer Diameter:** 20 - 80mm
- + **Length:** 100 - 400mm
- + **Load Bearing Capacity:** 1000 - 6000N
- + **Application:** Power & Energy Sector



# Bar Pins

## Product Specifications:

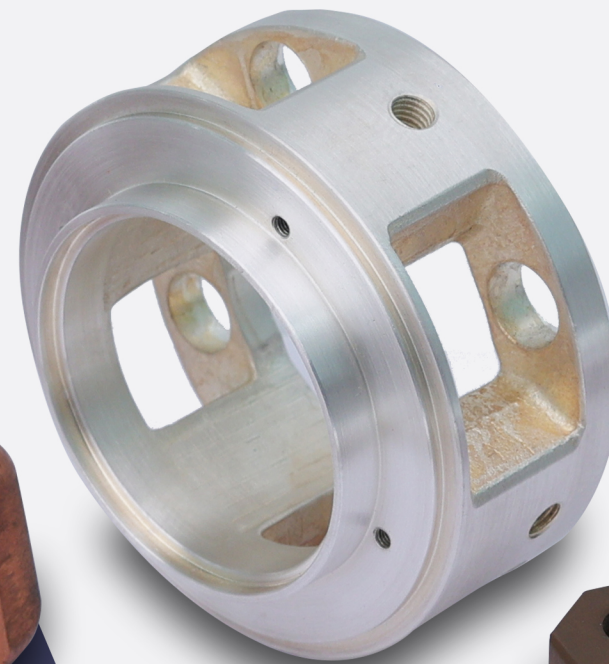
- + **Varieties:** 250+
- + **Outer Diameter:** 6 - 70mm
- + **Length:** 6 - 700mm
- + **Surface Roughness:** Up to Rz5  $\mu\text{m}$
- + **Materials:** SS420 / SS431 / HE30 / HSS-M2
- + **Application:** Power & Energy Sector



# Contacts

## Product Specifications:

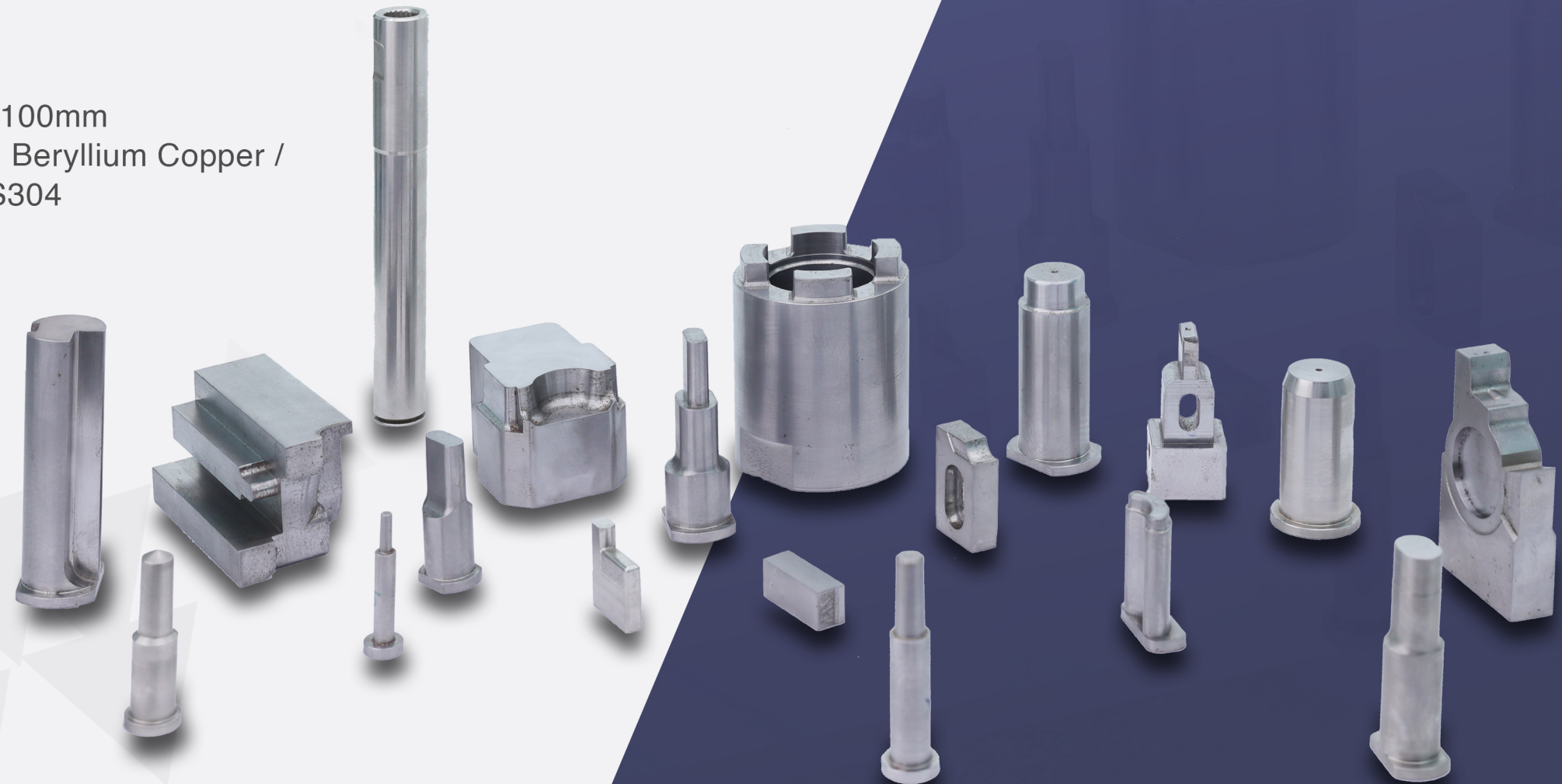
- + **Varieties:** 5+
- + **Base Metal:** Copper
- + **Plating Material:** Silver
- + **Application:** Power & Energy Sector



# Moulds & Ejector Pins

## Product Specifications:

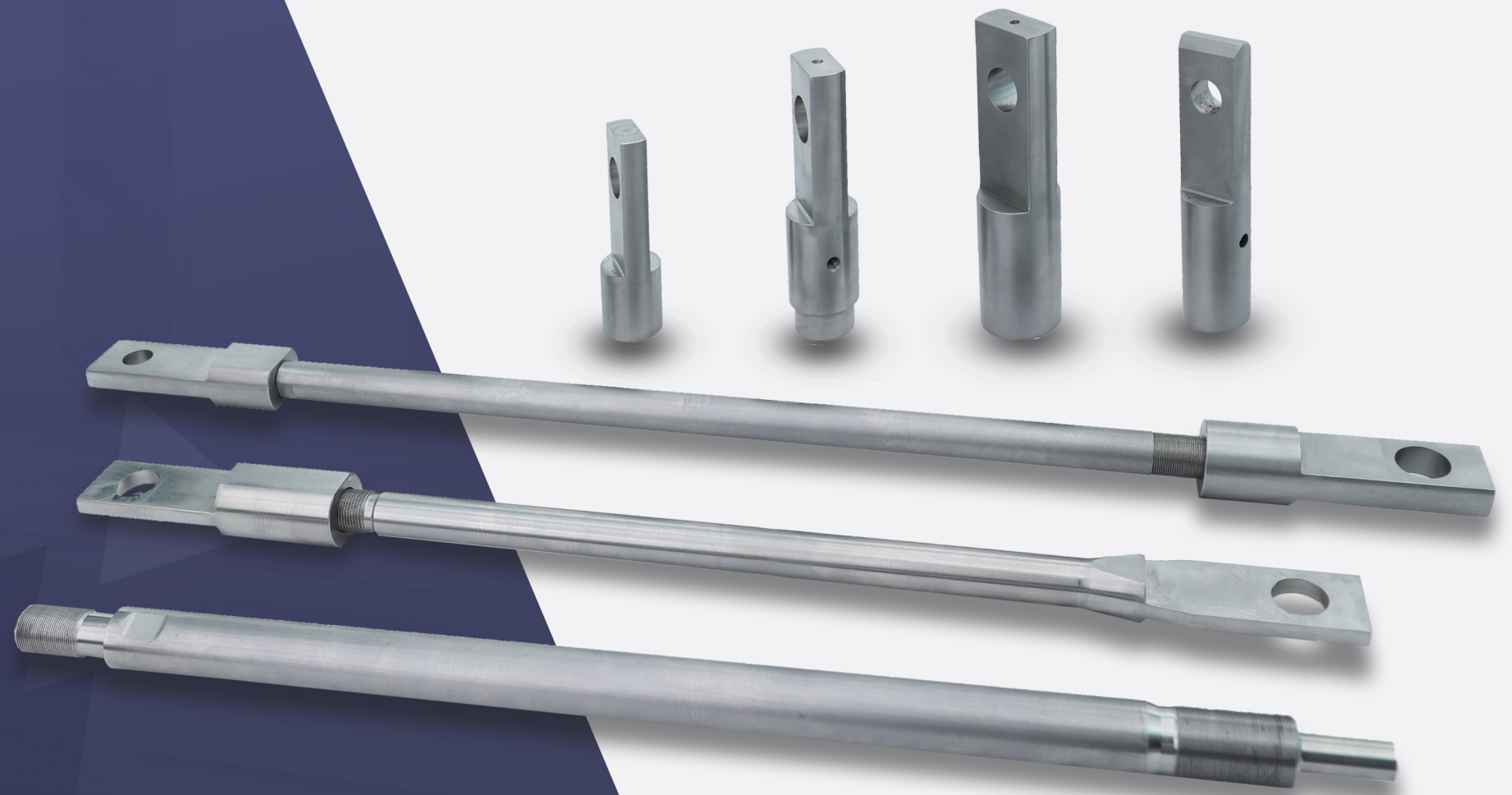
- + **Varieties:** 100+
- + **Outer Diameter:** 12 - 105mm
- + **L/W/H:** 3 / 20 / 10 - 150 / 80 / 100mm
- + **Materials:** 1.2343 / 1.2344 / CoNi Beryllium Copper / Alloy20 / HSS-M2 / SS304
- + **Application:** Casting Sector



# Drive Rods

## Product Specifications:

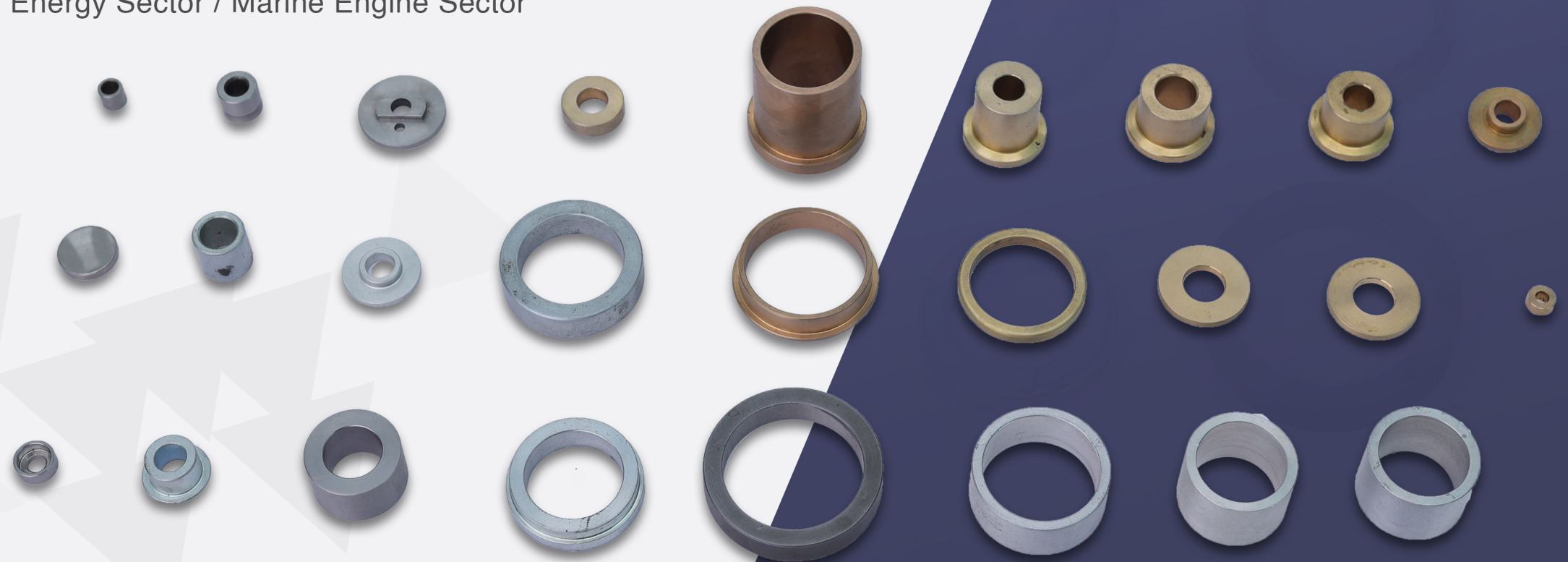
- + **Varieties:** 12+
- + **Outer Diameter:** 12 - 45mm
- + **Length:** 120 - 700mm
- + **Materials:** SS420 / SS431
- + **Application:** Power & Energy Sector



# Guide Rings & Bushes

## Product Specifications:

- + **Varieties:** 50+
- + **Outer Diameter:** 10 - 450mm
- + **Materials:** Brass / Phosphor Bronze / Copper / He-30 / EN-8 / SS420 / SS431 / SS304 / 20MnCr5
- + **Application:** Power & Energy Sector / Marine Engine Sector





# Spot Welding Electrodes

## Product Specifications:

- + **Varieties:** 50+
- + **L/W/H:** 10 / 8 / 8 - 15 / 30 / 32mm
- + **Materials:** Copper / Tungsten / Molybdenum / Silver / Chromium Copper / Electrolytic Copper
- + **Application:** Industrial Sector



# Automobile Shafts

## Product Specifications:

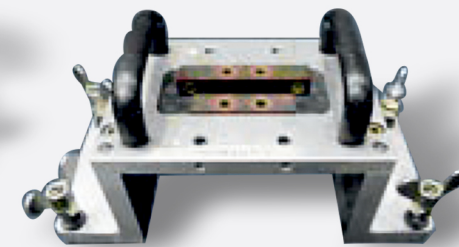
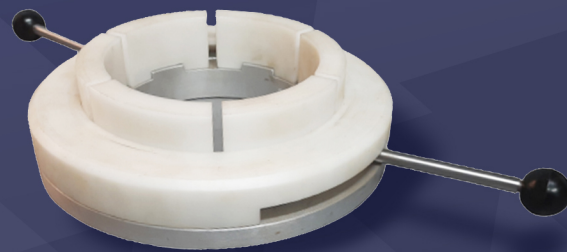
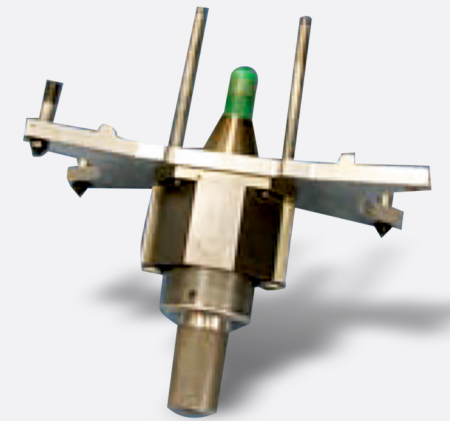
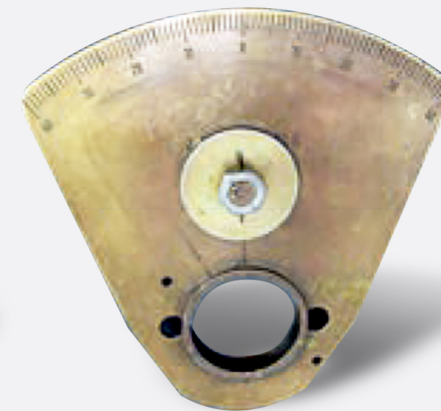
- + **Varieties:** 60+
- + **Outer Diameter:** 6 - 80mm
- + **Length:** 70 - 150mm
- + **Material:** 30CrNiMo8
- + **Application:** Automobile Sector



# Jigs & Fixtures

## Product Specifications:

- + **Types:** Assemblies / Job Holding / Inspection / Testing
- + **Materials:** Brass / Copper / Aluminium / Silver / Tungsten / Molybdenum / Electrolytic Copper / Bakelite / Stainless Steel / Mild Steel / Alloy Steel / High Steel / Plastic / Nylon / Resin / Wood
- + **Application:** Industrial Sector



# Metal Crates & Boxes

## Product Specifications:

- + **Length:** 500mm - 7500mm
- + **Materials:** Galvanized Steel Sheets / Mild Steel Angles / Mild Steel Channels / Hot Rolled Sheets / Mild Steel Flat Bars/ Mild Steel Sheets



# GET IN TOUCH

GERMANY

INDIA

 Shubhneel Industries

 Shubhneel Industries

 [www.shubhneel.com](http://www.shubhneel.com)

 [info@shubhneel.com](mailto:info@shubhneel.com)



+91-70308-46007  
+91-98226-18932



G-39/6, MIDC, Waluj,  
Aurangabad - 431136, Maharashtra, India



+49 (0) 17682176530



FUX Festigungs- und Expansionszentrum  
Alter Schlachthof 33, D-76131 Karlsruhe,  
Germany